



GMT MONTHLY MEMBERSHIP PROGRESS REPORT

Results as of: 8/31/2019

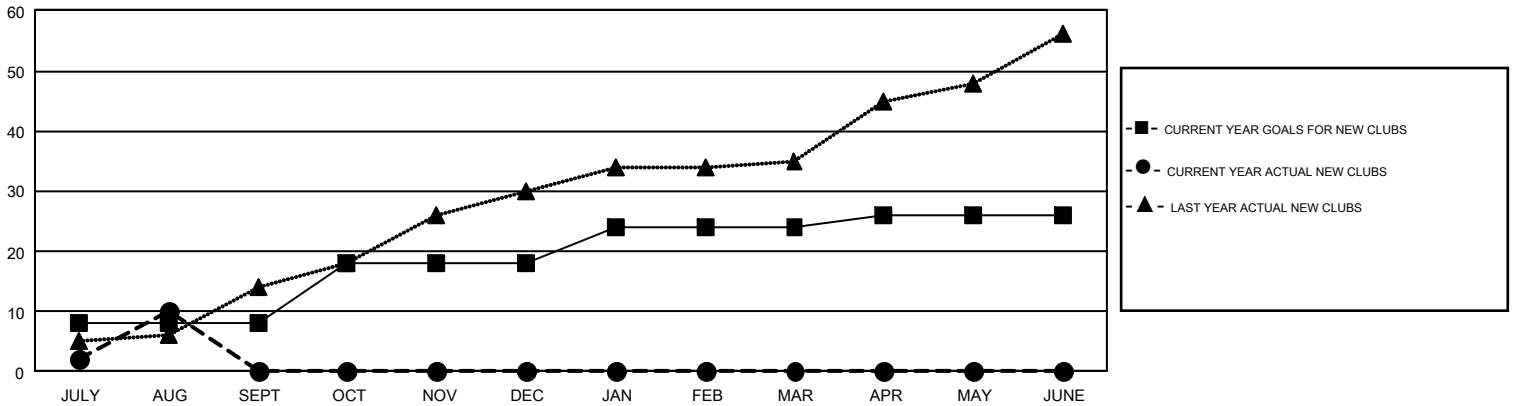
GMT Constitutional Area 5 - E, Group N

GMT: OPEN

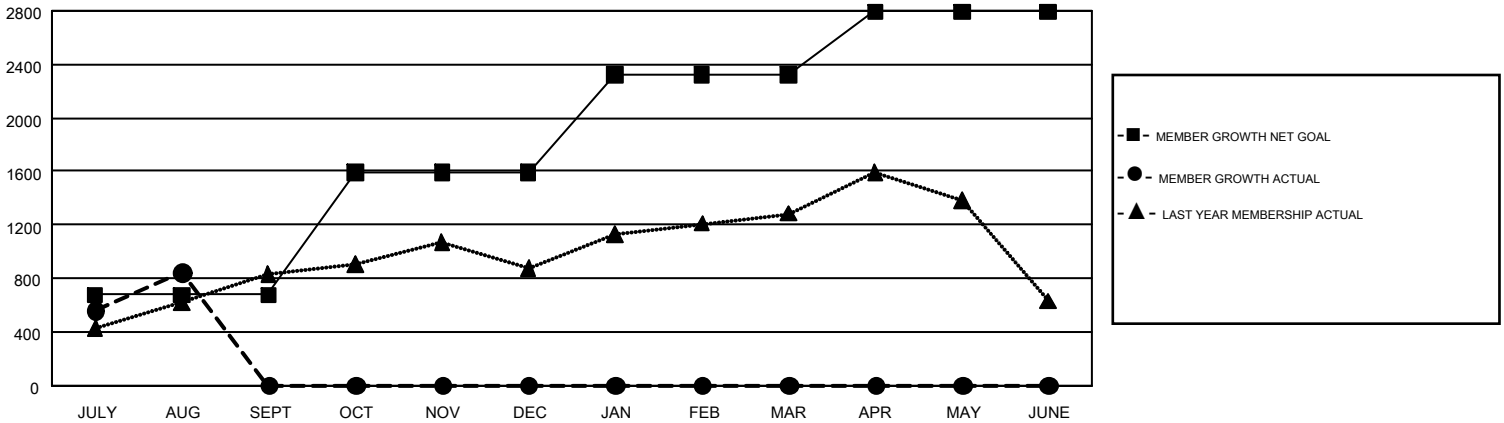
REPORT DOES NOT INCLUDE CLUBS IN UNDISTRICTED AREAS.

Clubs				Members			
RESULTS FOR 2019-2020				RESULTS FOR 2019-2020			
QUARTER	NEW CLUB GOAL	NEW CLUBS	DROPPED CLUBS	QUARTER	MEMBER GROWTH NET GOAL	MEMBER GROWTH ACTUAL	DROPPED MEMBERS ACTUAL (including transfers)
JULY/AUG/SEPT	8	10	7	JULY/AUG/SEPT	675	1,726	757
OCT/NOV/DEC	10	0	0	OCT/NOV/DEC	915	0	0
JAN/FEB/MAR	6	0	0	JAN/FEB/MAR	735	0	0
APR/MAY/JUNE	2	0	0	APR/MAY/JUNE	470	0	0

GOALS AND ACTUAL NEW CLUBS CUMULATIVE



GOALS AND ACTUAL MEMBERS CUMULATIVE



DROPPED CLUBS: 7	329 CLUBS OF 749 ADDED 1 OR MORE NEW MEMBERS	<u>GENDER DISTRIBUTION</u>	
<u>DROPPED MEMBERS</u>		MALE	15,886 (70.08%)
DECEASED	7	FEMALE	6,781 (29.92%)
CLUB CANCELLED	4	TOTAL FAMILY UNIT MEMBERS	
OTHER	746	2,344	
TOTAL	757	FAMILY MEMBERS PAYING HALF DUES	
		1,311	

[CLICK HERE FOR CUMULATIVE MEMBERSHIP DATA](#)